

OTTER POINT & SHIRLEY RESIDENTS & RATEPAYERS ASSOCIATION (OPSRRA) INFORMATION UPDATE - NOVEMBER 2005

The Otter Point & Shirley Residents & Ratepayers Association (OPSRRA) is a representative community organization with an elected Board of Directors and strives to present the points-of-view of its members, residing in the rural communities of Shirley and Otter Point, to local government. OPSRRA was founded in 1992 and has a membership of about 325.

Lifetime memberships are \$5.00 and are available from OPSRRA directors—see our web site (www.opsrra.com) for further information.

The purpose of our society is to:

- Ensure that the development of the two communities of Shirley and Otter Point takes place in an orderly way and in the best interests of its residents.
- Co-operate with local government and other public bodies in the furtherance of the objectives of the society and benefits to the community.
- Concern itself with the performance of government agencies.
- Encourage citizens to stand for public office.
- Promote community spirit and sense of identity by organizing or supporting appropriate activities.

Are you an OPSRRA member? Do you want to receive the OPSRRA newsletter and notice of meetings directly to your e-mail address? OPSRRA is now e-mailing this newsletter to over 90 of our members. Contact Arnie Campbell at: d.acampbell@shaw.ca if you want to receive this membership service.

OPSRRA's EXECUTIVE AND DIRECTORS

Ken Pungente President
Phone: 642-5177

Arnie Campbell Vice-President
Phone: 642-3113
Email: d.acampbell@shaw.ca

VACANT Secretary/Treasurer

Sandy Barta Director
Email: sbarta@shaw.ca

James Dexter Director
Phone: 642-6841
Email: dexmar@shaw.ca

David Evans Director
Phone: 642-2477

Mitch Moneo Director
Phone: 642-5146
Email: moneo@shaw.ca

Wayne Fritz Director
Phone: 642-0440
Email: wlfritz@shaw.ca

IN THIS ISSUE

1. Upcoming Meetings and Events
2. Invitation to Community Emergency Training
3. New Web Site Address For OPSRRA
4. Location of Community Notice Boards
5. November 2 **Public** All Candidates Meeting
6. Voter Information For November 19 Elections
7. Land Use Committee & Advisory Planning Commission by Acclamation
8. Candidates' Election Statements
9. Update on District of Sooke's Proposed Annexation of Otter Point Properties
10. OPSRRA Letter Asking For Governance Study
11. New Official Community Plans For Otter Point & Shirley/Jordan River
12. New Otter Point Parkland Acquisition–Poirier Lake
13. Free Advertising for Businesses in Shirley & Otter Point
14. Back Issues of the OPSRRA Newsletter

1. UPCOMING MEETINGS AND EVENTS

Contact Arnie Campbell at: d.acampbell@shaw.ca to have your community event listed in our monthly community events calendar.

Tuesday
November 1

JDF Land Use Committee Meeting

7:00 p.m.
District of Sooke Council Chambers
Council Chambers
2225 Otter Point Road

Agendas are available at the CRD Planning Services office, 2205 Otter Point Road, or can be found at www.crd.bc.ca/jdf/index.htm. Click on 'Agenda' at the top of the page.

Wednesday
November 2

Otter Point All Candidates Meeting Regional Director & School Trustees

7:00 p.m.
Otter Point Fire Hall
3727 Otter Point Road (at Kemp Lake Road)

Monday
November 7

Shirley All Candidates Meeting Regional Director & School Trustees

7:00 p.m.
Shirley Community Hall

Tuesday
November 8

Otter Point Fire Trustees Annual General Meeting

7:30 p.m.
Otter Point Fire Hall
3727 Otter Point Road (at Kemp Lake Road)

Wednesday
November 9

Shirley Community Association General Meeting

7:30 p.m.
Shirley Community Hall

Friday November 11	Remembrance Day Ceremony 10:45 a.m. Shirley Community Hall
Tuesday November 15	JDF Land Use Committee Meeting 7:00 p.m. District of Sooke Council Chambers Council Chambers 2225 Otter Point Road
	Note: This meeting may be cancelled. Check with CRD Planning services.
Saturday November 19	ELECTION DAY REGIONAL DIRECTOR & SCHOOL TRUSTEES 8:00 a.m. To 8:00 p.m. Shirley Community Hall & Otter Point Fire Hall
Monday November 28	OPSRRRA Director's Meeting Members Welcome 7:30 p.m. Board Room SEAPARC Leisure Complex 2168 Philips Rd. Sooke
Second and Fourth Thursday of every month	Shirley Quilters and Crafters 10:00 a.m. to 3:00 p.m. Shirley Community Hall

2. NEW WEB SITE ADDRESS FOR OPSRRRA

We have made some important changes to the way our web site functions:

1. We have moved the pages to a new server—from Arnie's personal Shaw account—and Joe Carr is now our gracious host on his personal server. You won't notice anything different from your end because of this change, but it will mean that our website will be easier to manage and it will be easier to build a form for new member registration and a form for business listing applications. It will also be very easy to make the change to another server in the future, if the need ever arises.
2. **We have had to change the name of our website from 'opsrra.com' to 'opsrra.ca'.**
This is the part you will most definitely notice. It will take time before the “web bots” pay attention to our new name so a search (using Google, for example) is likely to attempt to take you to our old name.
Don't forget to change your “favourites” or bookmark to www.opsrra.ca .

Please contact me (Sandy Barta at 642-0205 or sbarta@shaw.ca) if you need help. I can walk you through the process.

3. INVITATION TO COMMUNITY EMERGENCY TRAINING

Invitation to Community Emergency Training Juan de Fuca

You Can Help in an Emergency: If you yearned to help those affected by such events as Hurricane Katrina, the Indonesian Tsunami, or the BC Wildfires, you will be interested in how you can help your own community during a disaster.

Juan de Fuca communities are subject to a number of hazards, including earthquake, wildfire, and tsunami. We are not immune. In fact, we know from historical records that Vancouver Island is periodically hit by natural events from time to time. Our time will come.

Work in the EOC: Most emergencies can be handled at the scene by Fire Department, RCMP, or Ambulance personnel. In major incidents, however, these first responders will require support. In such situations, we would call on area residents to volunteer at the Emergency Operations Centre, commonly called the "E-O-C."

EOC personnel perform a number of essential tasks, such as gathering information on the extent of damage, locating heavy equipment, documenting actions, and tracking costs. EOC personnel operate indoors in an office setting and are not exposed to dangers.

Training Available: We will offer four courses, each consisting of three hours of instruction.

- A – Overview of the JdF Emergency Program and Response Plan
- B – EOC checklists and function aids
- C – Practice working together in an EOC by walking through a scenario
- D – More practice while working in the EOC facility and using equipment

Training Schedule: The JdF Emergency Program will offer these sessions beginning in November and continuing in the New Year. All meetings will be held on weekday afternoons and evenings to allow participation by community members.

Date / Time	Afternoon Session	Evening Session
November 22 Session A	1:00 to 4:00 pm	7:00 to 10:00 pm
January 10 Session B	1:00 to 4:00 pm	7:00 to 10:00 pm
January 24 Session C	1:00 to 4:00 pm	7:00 to 10:00 pm
February 14 Session D	1:00 to 4:00 pm	7:00 to 10:00 pm

You can attend either the afternoon or the evening session. You do not need to attend both. All sessions will be held at the Sooke Legion, Second Floor, 6726 Eustace Road in Sooke. Parking is available in front of the facility.

Test Drive: Don't know if this is for you? Come to the first session to learn more, and then decide. You are not obliged to attend future sessions. Your name will be added to our call list only after you complete the training, and you can remove your name at any time.

Participants: EOC training is open to any interested community member. These are working sessions, not public information sessions.

For More Information, Contact: Al Strickland at tel: 642-6888, e-mail: alstrick@shaw.ca

4. LOCATION OF OPSRRA COMMUNITY NOTICE BOARDS

Further donations of cash and materials have allowed OPSRRA to install community notice boards at the following locations:

Otter Point Road	at Young's Lake Road
Tugwell Road	at Michelson Road
Kemp Lake Road	near Davidson Road
King Road	at Corby Ridge
West Coast Road	at Tugwell Creek
West Coast Road	at Kemp Lake Road (Otter Point Store)

We will add more signs in Otter Point as we receive donations and offers to build more signs. We need:

- 8 foot long 4"x4" cedar or pressure-treated posts
- 1/2" or better plywood (part sheets may be suitable)
- 1"x1"x4" cedar
- exterior paint (preferably white)
- money for nuts, bolts, screws, etc.

Although the initial plan was to also place community notice boards in Shirley, this won't happen as the Shirley community wishes to do their own signs.

5. ALL CANDIDATES PUBLIC MEETING

OPSRRA will host a **public**, all-candidates meeting on Wednesday, November 2 at 7:00 p.m. At the Otter Point Fire Hall (3727 Otter Point Road, at Kemp Lake Road).

The eight candidates for School Trustee (3 positions) and two candidates for regional director (1 position), have been invited. Each candidate will have a brief opportunity to present their reasons why they should be elected, followed by a Question & Answer period.

The eight candidates for School Trustee (3 positions) and two candidates for regional director (1 position), have been invited. Each candidate will have a brief opportunity to present their reasons why they should be elected, followed by a Question & Answer period.

This **public** All Candidates meeting is intended for residents of Otter Point. The Shirley community has organized an All Candidates meeting in Shirley on Monday, November 7 at 7:00 p.m. at the Shirley Community Hall.

6. VOTER INFORMATION FOR NOVEMBER 19 ELECTION DAY

Residents of Juan de Fuca Electoral Area will be voting for 1 regional director (2 candidates) and 3 school trustees (8 candidates)

Date: Saturday, November 19

Time: 8:00 a.m. – 8:00 p.m.

Place: Residents of the Juan de Fuca Electoral Area can vote at any place in the JDF Electoral Area: see the CRD ad in the Sooke News Mirror.

Residents of Otter Point and Shirley can vote at the Otter Point Fire Hall and the Shirley Community Hall

Advance voting:

Date: Wednesday, November 9 and
Wednesday, November 16

Time: 8:00 a.m. – 8:00 p.m.

Place Sooke Community Hall, 2037 Eustace Street, Sooke, or
Sooke School District Offices, 3143 Jacklin Road, Langford.

Elector qualifications:

- 18 years of age or older on November 19, 2005
- Canadian citizen
- Resident of B.C. for six months
- Resided within the Juan de Fuca Electoral Area for 30 days

Non-resident Property Elector:

- Special requirements apply. Contact the CRD.

If you are not a registered voter you will need two pieces of identification to register at the polling station. BC Drivers license, BC Care Card, Social Insurance Card, Citizenship Card, Property tax notice, utility bill, etc. are accepted.

7. LAND USE COMMITTEE AND ADVISORY PLANNING COMMISSION BY ACCLAMATION

The following positions have been filled by acclamation:

Shirley/Jordan River Land Use Committee (LUC)

- Terri Alcock

Otter Point Land Use Committee (LUC)

- Ken Douch

Shirley/Jordan River Advisory Planning Commission (APC)

- Dominique Bernardet
- Sonja deWit
- Volker Metz
- Jane Munroe
- Joen Nelson

Otter Point Advisory Planning Commission (APC) *

- Wayne Fritz
- Sid Jorna
- Heather Phillips

* There are 2 vacancies on the Otter Point APC that can be filled by appointment by the regional director.

8. CANDIDATES' ELECTION STATEMENTS

OPSRRA offered all of the candidates for school trustee and regional director the opportunity to submit a brief election statement. The following candidates replied:

Sooke School District #62, Milne's Landing, three vacancies

Margot Swinburnson

I bring a history of reliability, advocacy and accountability to the table as a trustee.

I believe in fiscal responsibility. Programmes must be sustainable, and administrators must be accountable.

I am not afraid to make the hard decisions, but will not do them without good information.

I have spent time in all the unique communities that make up the Milnes Landing Zone of School District 62. We share similar dreams, goals and aspirations for our children and grandchildren in this area. Quite simply, we want the very best education possible for our students.

I share that desire and will work hard to achieve it.

Programmes that I have advocated for in our Zone are:

- The Hockey school at EMCS
- The expansion of the International Programme to our community
- French immersion expanded to Grade 8 and up in Milnes Landing Zone
- The Trades and Technical programmes expanded in the District. The students are well supported, the programmes are better linked with Community College admission

If I am re-elected, I will continue to work for excellence within our District

I will continue to work to bring holistic comprehensive support for troubled youth

I will advocate for a more positive police presence in our schools (or just more police presence in our schools)

David Wighton

Hello. My name is David Wighton and I'm a candidate for School Trustee in SD#62.

I'm a retired educator. My K-12 educational background includes stints as a classroom teacher (Vancouver), vice-principal (Clearwater), and secondary school principal (Masset).. When microcomputers burst on the educational scene, I saw them as an ideal tool for improving student learning and immersed myself in them. That led to a Masters Degree and a Ph.D in Educational Computing, and jobs as a manager with the Alberta and BC Ministries of Education.

I have also served as a PAC President and was active for 30 years in coaching school and community teams. I was a member of the local BCTF contract negotiating team when I was in Clearwater and was the Head Negotiator for the local teachers/administrators while I was in Masset My four children are now living on their own.

I became a teacher because I wanted to help students learn the skills and knowledge they would need in their lives. However, over time, my focus changed from teaching students to improving the educational system as a whole. My passion in life has been helping teachers to teach and enabling students to learn. I bring that same commitment and passion to the position of School Trustee. My wide-ranging experience in the school system enables me to understand the needs and frustrations of all stakeholder groups. Moreover, as a retiree, I am able to devote a lot of time and energy to the position.

Mary Jane Rose

My name is Mary Jane Rose and I live and work in Sooke. My husband and I own and operate "West Coast Natural Foods." We have two children currently attending Ecole Poirier.

I have an extensive background in community service. I have served on boards, working with governments on all levels. I have management and financial experience, with a decade of experience working with budgets in the millions and being accountable for them. Last year I sat on the Sooke District French Immersion Parents Advisory Committee. We were instrumental in establishing French Immersion Grades 9 – 12 in the Milne's Landing Zone, with the program beginning this year in Grade 9 at Edward Milne Community School.

The challenges I see for our schools are numerous. I feel we need to increase learning assistance for all students. We need to look at each individual school's needs to find the unique support required for them – whether that be extra funding for the libraries, much sought-after music programs, or basic supplies for the classroom – all are critical in providing the basics with which to educate our children.

I believe we need equal representation on both ends of the School District because I feel that this has not always been the case. Our voices in Sooke and Port Renfrew need to be heard!

Our zone needs an active trustee, one who attends meetings, arrives on time and does not leave early. We need someone to listen to the needs of the parents, teachers and students. Someone who not only listens, but takes the messages back to the Board for action! If elected, I will do my best over the next three years to support our schools. Thank you for your support.

Bob Phillips

Bob Phillips makes the job easier for everyone he works with. He has experience as a Sooke School Board Trustee from 1996 to 2002. When he promises transparent decision making, effective teamwork and strong support for the success of District 62 students and staff, you know he will deliver.

Bob is an exceptional problem solver with a passion for public education. He learns the rules, where the resources are, and what the needs may be. As well, Bob works to achieve creative solutions or the least detrimental compromises. He recognizes and respects the importance of individual and community needs and interests.

Bob and Heather Phillips have lived in the Sooke area since 1982 with Bob working as a medical social worker at Gorge Road Hospital and, more recently, at

Victoria General Hospital. Heather recruited him for life on the West Coast in 1972. Together, they have seen their two daughters, Kate and Naomi, through our local schools and as a family have contributed much to the community.

Before 1982, Bob taught a total of four years in Africa, earned his Masters Degree from the UBC School of Social Work, was the child protection worker for the Sooke area, and was the drug and alcohol counsellor in Port Alberni.

As a volunteer, Bob has served on the Board of the Independent Living Housing Society and of the Multiple Sclerosis Society of Victoria in the 1980's. He has served as Director and Vice President of the Health Sciences Association of BC. He is also a field-work supervisor for the Bachelor of Social Work program at UVic. His mentorship and support have been much appreciated by students over the years.

Bob has the skill, experience, energy and dedication needed for the School Trustee position.

Laura Doll Sutherland

Age: 40

Occupation: Mom/Homemaker/Self-employed

Previous experience in elected office: None

Community Involvement: Class Rep. & Emergency Preparedness Committee, Saseenos Elementary School PAC; Enrollment & Orientation Committee, Vancouver Island Cooperative Preschool Association; Past-President, President, CASA Rep., Family Dance & Photo Committees, Sooke Preschool Association (A Co-op); Start-up Committee & Board of Directors, Sooke Cooperative Association of Service Agencies (CASA); Feasibility Study Group, Board of Directors, Board Secretary, Sooke Family Resource Society (SFRS); plus work with other community organizations & projects.

Three Issues:

1. Improve range & quality of educational opportunities for our children while remaining fiscally responsible. Innovative programs help to attract and keep children in the public school system
2. Avoid the past "game of chicken" style of contract negotiations by encouraging a collaborative model of negotiation involving consultation with education partners to find creative solutions to issues
3. Work to insure the new mandate of the Ministry of Education to include early learning, community libraries, etc. does not impede the school board's ability to continue improving student achievement. School boards will need to make sure that these new responsibilities come with appropriate funding

Rob Gordy

First I wish to sincerely thank the electorate for the privilege of serving on the Sooke School Board for the past 6 years. I must confess that it's been an enlightening "education". We have come through some challenging budget times

and finally this past year our Board was able to put substantial funding back into our classrooms instead of the usual round of difficult cuts. It appears that the government is heeding the words of trustees and finally moving towards adequate funding for our education system. We must keep up the pressure to maintain and improve the necessary funding for our students. Education for our children is far too valuable to let inadequate funding erode its quality. School Boards are complex organizations. We deal with all levels of government and bureaucracies. Our focus must be on revitalizing relationships with teachers in light of the recent labour disruption. We value the contribution of our teachers, support staff and parents and realize how deeply they care. I have always been a strong supporter of French Immersion and have sat on the F.I. Review Committee. My three children have been enrolled in French Immersion since Kindergarten. I also wish to see the programme expand at the secondary level and am working towards this.

There is still much work to accomplish in the years ahead. Our graduation rates are improving still need to match the provincial average. Support for First Nations and Special Needs students is growing but we need to provide more. Sooke is a growing community and I am deeply impressed with the support we receive from our local businesses and service organizations. Together we can provide outstanding opportunities for our children when we work in a collaborative fashion. Empowering our children to be successful citizens is made easier with the support you have given them over the years and I thank you for that.

JDF Electoral Area Regional Director, one vacancy

Eric Lund

Friends and neighbours, I have been **your** elected representative for the past three years. During the 2002 election campaign, I made certain promises. Now, upon reviewing those promises, I can report that each and every promise has been kept. A list of those promises can be found on my web site at lundcampaign.ca

Much has been accomplished in the past 3 years:

- We created a land use bylaw, so that each community is now represented when land use decisions are made;
- We created the JDF Parks Committee and, as a result, have been able to acquire two new nature parks;
- We created a new bylaw for the emergency program and now have a search and rescue program second to none in the Capital Regional District;
- We supported worthy causes through grants-in-aid, and many non-profit societies have benefited;
- We stopped the proposed amalgamation of Otter Point, East Sooke and Shirley with the District of Sooke by exposing a really bad offer.
- We completed 6 OCPs, which have now been forwarded to the Province for approval.

I urge you to examine what each candidate for Regional Director did during his three years in office. The question that you as voters will answer on November 19

is: did you prefer the governance model prior to Erik Lund, or do you want to continue with the present model for the next three years?

Once you have decided, please get out and vote on November 19. Our future depends on your participation. Thank you.

9. UPDATE ON DISTRICT OF SOOKE'S PROPOSED ANNEXATION OF OTTER POINT PROPERTIES

1. Sooke voters will be asked two referendum questions on November 19.

“Are you in favour of the District of Sooke Council proceeding with a boundary extension to include the East Boundary (Gillespie Road) lands into the municipality?” YES ___ NO ___

“Are you in favour of the District of Sooke Council proceeding with a boundary extension to include the West Boundary (Kemp Lake) lands into the municipality?” YES ___ NO ___

In the meantime, the District of Sooke has informed the province and CRD Planning Services that they will not be submitting the District's Regional Context Statement until after they know the outcome of the boundary extension referendum. Therefore any decision about extending the District's urban containment boundary, to include any of the land proposed for annexation, will have to await the outcome of the referendum; and, if approved by Sooke voters, the decision of the next Mayor and Council.

2. OPSRRA submitted the following statement to the Sooke Area Ratepayers Association (SARA). It is on SARA's web site: www.sookeratepayers.org, along with a submission from Brian Butler, which gives his reasons as to why their family's Otter Point lands should be annexed by the District of Sooke.

REASONS WHY THE VOTERS OF SOOKE SHOULD VOTE AGAINST THE ANNEXATION OF PROPERTIES IN OTTER POINT

Sooke Council has narrowly voted to support the annexation of 263 acres of land in Otter Point. The Otter Point & Shirley Residents & Ratepayers Association (OPSRRA) has been asked by the Sooke Area Ratepayers Association to respond to reasons, given by one property owner, as to why the voters of Sooke should support the proposed western expansion of the District of Sooke.

Although the property bordering Kemp Lake has become the focus of the debate, the annexation issue is much broader than one property and one land owner's desire to consolidate their family property under one municipal government. There are many other issues associated with the proposed boundary extension that will likely affect residents of the District of Sooke and the Otter Point community.

Voting “**No**” in the up-coming November 19 boundary extension referendum will:

1. Protect the Kemp Lake Watershed

The Kemp Lake Waterworks District supplies drinking water to 425 homes in Otter Point (about 2/3 of our community's population). Protection of the watershed that supplies Kemp Lake is imperative. High density development could compromise the quality and quantity of that water. OPSRRA believes that development within the watershed is best left under the control of the community that is dependent upon it for their drinking water.

2. Ensure an Emergency Water Source

Where would you get your emergency drinking water if a major emergency - such as an earth quake or forest fire, disrupted the CRD water service to Sooke? Kemp Lake is an alternate source of safe and accessible emergency drinking water for residents of the Sooke Area.

3. Long Term Vision

Sooke has been a municipality for only 6 years. It is still in the process of deciding its future. Decisions about where to locate and how to finance higher density development, expansion of the sewer system, roads, and other infrastructure services have come-up for debate. Consensus on a long term vision for the development of Sooke has not yet emerged. Boundary extensions should only happen as part of a long term vision.

4. Regional Growth Strategy

All of the Greater Victoria municipalities (including the District of Sooke) have agreed to a CRD Regional Growth Strategy - which would consolidate urban growth within identified areas and prevent urban sprawl. The District of Sooke presently supports the expansion of the District's urban containment boundary to include the proposed annexation properties. This would remove protected rural green space from Otter Point and possibly replace it with higher density residential development. This is counter to the spirit and intent of the Regional Growth Strategy and the Otter Point Official Community Plan.

5. Unknown Tax Costs For Sooke

At the moment there are no definite costs for the taxpayers' portion of the development costs to service the lands proposed for annexation. CRD Water Services has said that community water would not be extended to these areas at CRD expense. The Ministry of Transportation has indicated that there would be a cost to Sooke, associated with road maintenance, for roads that exit the annexed properties onto roads outside of Sooke. Fire protection and water services agreements will have to be negotiated with the Otter Point Fire Department and the Kemp Lake Waterworks District.

6. Maintaining Democratic Decision-Making

In February of 2005 about 60% of the residents of Otter Point, Shirley and East Sooke voted 80% **against** amalgamating with the District of Sooke – largely because of concerns that:

- Sooke Council's support for amalgamation was seen as being, primarily, a way to increase their tax revenue.
- Sooke Council chose not to articulate any long-term plan or vision for the proposed amalgamation areas.
- Amalgamation was seen as leading to higher property taxes in the rural areas.

Under the existing provincial legislation, the District of Sooke is supporting the request of some landowners, along the Otter Point and East Sooke boundaries, to be annexed into Sooke – the reverse is not permitted.

- Where is the fairness in this? Would Sooke residents accept the annexation of Sooke border land property by Langford or Metchosin?
- Some of the properties being considered for annexation have stated that they do not want to join Sooke - but would have no choice under the present provincial boundary extension process.

- If border properties in Otter Point and East Sooke are allowed to be annexed, where does the process end? What properties in Otter Point or East Sooke are the next “border lands”?

Residents of Otter Point and East Sooke can neither vote in this up-coming annexation referendum nor hold Sooke Council accountable for their decisions. This is undemocratic!

7. Maintaining Good Neighbours

Although the residents of Otter Point go to Sooke to attend schools, shop and use other services, they see themselves as a distinct community. Otter Point has just completed its own Official Community Plan, elects Otter Point residents to an Advisory Planning Commission and has an elected representative on the Juan de Fuca Electoral Area Land Use Committee. OPSRRA has asked the province to allow the community to explore its future governance options - just as Sooke did 6 years ago. We need time, and welcome the support of the community of Sooke while we complete this process. Meanwhile we would like to avoid conflicts with Sooke about the Kemp Lake watershed and our common boundaries.

So what can you do if you have an opinion on annexation and want to do something?

- Write a letter to the editor of the Sooke News Mirror or the Times Colonist.
- Write a letter to the Juan de Fuca Electoral Area Regional Director, (Erik Lund) or your Malaht/Juan de Fuca MLS (John Horgan).
- Write a letter to the Minister of Community Services (Ida Chong).
- Write a letter to the Minister of the Environment (Barry Penner) or Health (George Abbott).
- Encourage friends and family who live in Sooke to vote in the referendum for the Otter Point annexation.
- Attend the OPSRRA All Candidates meeting on November 2 (7:00 p.m. at the Otter Point Fire Hall).
- Contact the OPSRRA sub-committee on annexation (Wayne Fritz, Jim Dexter, Ken Pungente and Arnie Campbell).
- Donate time or money to OPSRRA to help us oppose the annexation of part of Otter Point.

10. OPSRRA LETTER ASKING FOR A GOVERNANCE STUDY

Although the property bordering Kemp Lake has become the focus of the debate Following the motion at OPSRRA’s February AGM (asking the province to fund a governance study for our area), OPSRRA wrote the minister of Community, Aboriginal & Women’s Services. A reply was never received. OPSRRA wrote the new Minister of Community Services on October 10.

Dear Minister Chong:

Re: Otter Point and Shirley Governance Study

I'm writing on behalf of the Otter Point & Shirley Residents & Ratepayers Association (OPSRRA) with three requests.

1. Our association passed a motion at our February 2005 AGM calling upon the province to fund a governance study for our area. We have never received an acknowledgement of that letter. I have attached a copy of the letter for your information and request a reply.
2. Our association's directors have read your comments of October 6th, in reply to questions from our MLA, Mr. John Horgan, concerning the conditions under which your Ministry would consider funding a governance study for our area. OPSRRA requests an opportunity to meet with a Ministry representative to follow-up on your comments.
3. OPSRRA would also request that your Ministry not make a decision about the proposed District of Sooke boundary extension until a governance study for our area has been completed.

Yours truly,

Ken Pungente, President OPSRRA

Note: On Thursday, October 6, John Horgan, MLA, had an opportunity to ask the Minister of Community Services several questions about the proposed boundary restructure and governance. The questions and answers are available on the Hansard web site: www.leg.bc.ca/hansard/8-8.htm . Go to the afternoon of October 6 and click on PDF and scroll down to page 730. Good Luck!

11. NEW OFFICIAL COMMUNITY PLANS FOR SHIRLEY, JORDAN RIVER AND OTTER POINT

The Official Community Plans (OCPs) for Otter Point & Shirley/Jordan River are complete and have been passed as bylaws. The new OCPs can be viewed at: www.crd.bc.ca/jdf/index.htm . Go to the Table on the left hand side of the page and "click-on" the OCP you want to view.

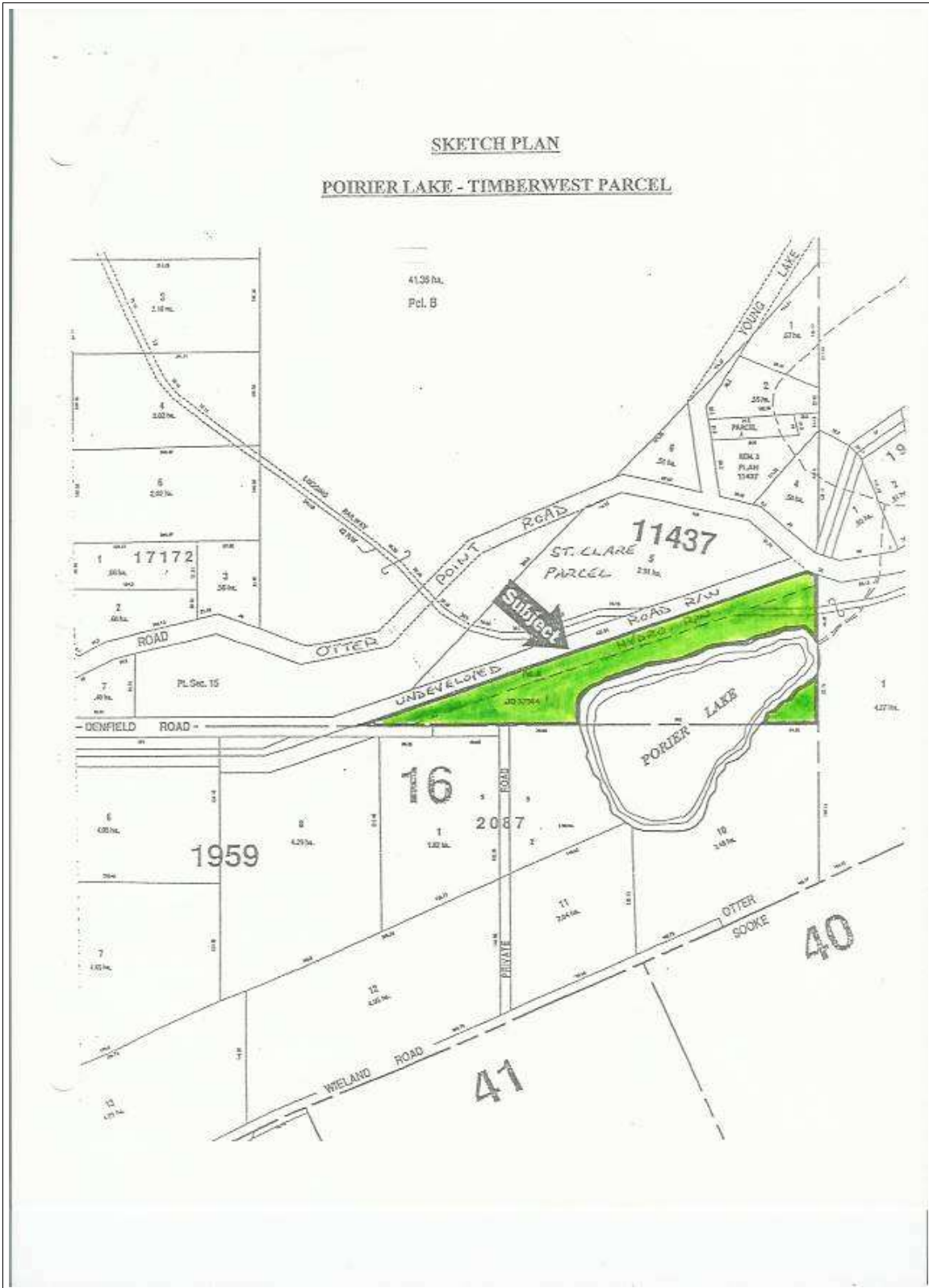
The Shirley/Jordan River & Otter Point Zoning committees have not met since the summer. CRD Planning Services and the regional director intended for the committees to only meet one more time before the draft Zoning Bylaw would have gone to Public Hearing. However, the chair of the Otter Point Zoning committee asked for additional public meetings for Otter point and this has now been agreed to. The Zoning committee meetings are expected to resume in November. Contact the JDF CRD Planning Services office for dates.

12. OTTER POINT PARK AQUISITION: POIRIER LAKE

The Juan de Fuca Parks Commission (OPSRRA President Ken Pungente is a Director) has just announced the recent purchase of a new waterfront park on

Poirier Lake. It was purchased from TimberWest Logging Co. It is approximately five acres in size and there is a small portion on the south east side that is only available by water. See sketch plan.

At this time it remains a passive park but this will be a jewel in our midst for future generations.



13. FREE ADVERTISING FOR LOCAL BUSINESSES ON OPSRRA'S WEB SITE

Do you operate a small business? Are you an OPSRRA member? OPSRRA is offering a free business listing service for members, on its web site: www.opsrra.com. We will list non-members for a suitable donation!

The purpose of this service is to provide an opportunity for businesses in Jordan River, Shirley and Otter Point to advertise their goods and services to their local community. We anticipate having listings for accommodation, farm produce, art, furniture, fishing charters, eco tours, firewood, knitting, soaps, landscaping, bookkeeping, sewing and more. More information, businesses already listed and a registration form are available on OPSRRA's web site (www.opsrra.com) under Business Listings.

The following business listings are on the OPSRRA web site:

Malahat Farms B&B	Beaches West B&B	Birds Edge Press
ALM Organic Farm	Full Circle Seeds	Tugwell Creek Honey Farm
Tugwell Creek Meadery	Kemp Lake Store	Sandy's Drywall Ltd
1001 Welding & Equipment Repair		Otter Point Beach House

14. BACK ISSUES OF THE OPSRRA NEWSLETTER

Back issues of the OPSRRA newsletter are available on the OPSRRA web site.

This monthly newsletter is prepared by the directors of OPSRRA. It is available to members by e-mail and to others on our web site: www.opsrra.com. To have an item you would like to have considered for placement in the newsletter, or make a comment about the newsletter, contact an OPSRRA director. OPSRRA tries to verify the correctness of the information in this newsletter; if we have got it wrong we will acknowledge that and make a correction as quickly as possible.
